



# Promoting authentic language acquisition in multilingual contexts




Co-funded by the  
Erasmus+ Programme  
of the European Union

The European Commission support for this project does not constitute an endorsement of the contents which reflects the views only of the authors, and the Commission cannot be held responsible for any use which may be made of the information contained therein.



Funded by the  
Erasmus+ Programme  
of the European  
Union



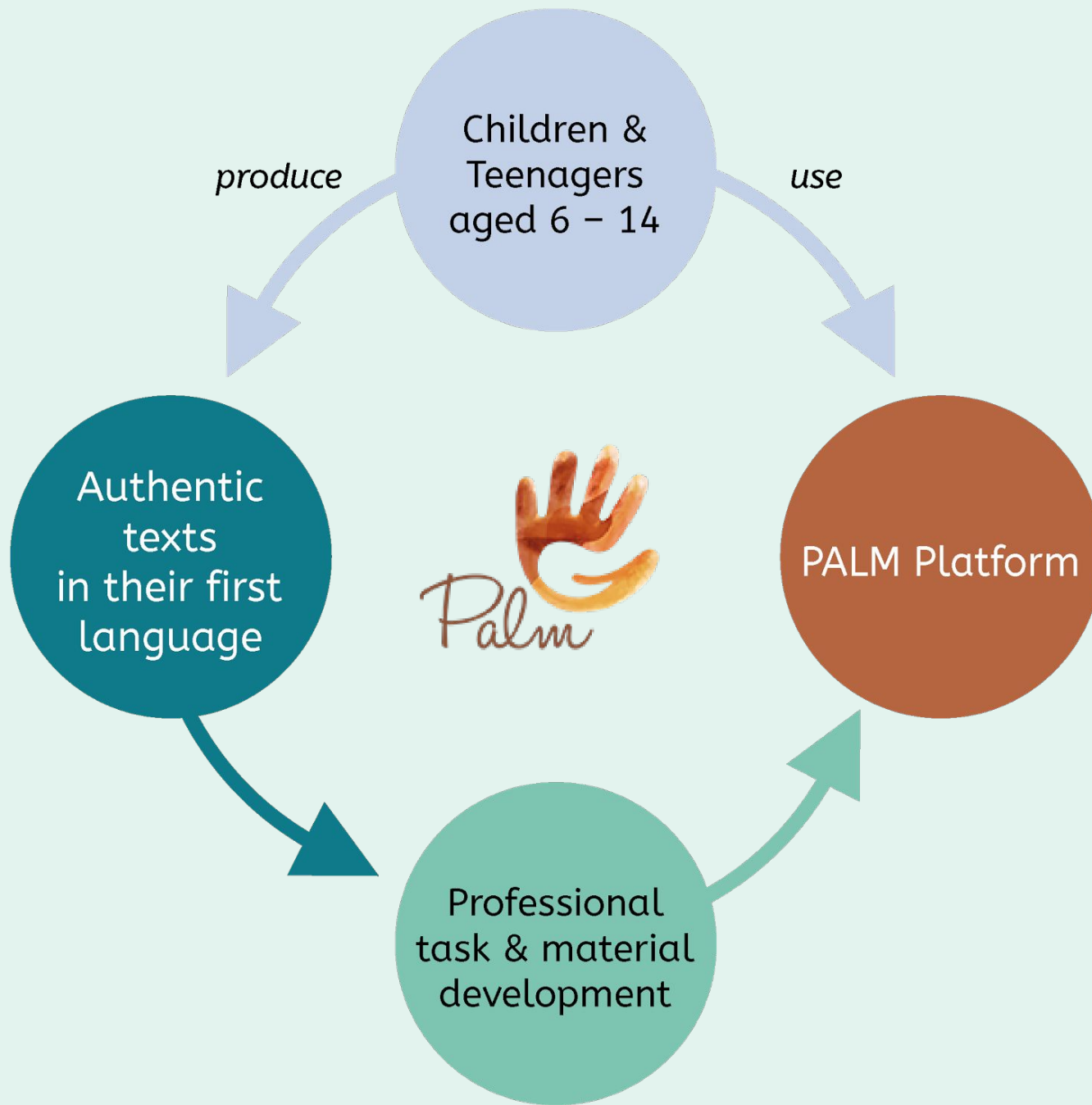
We produce  
1500 texts  
in our first  
languages

Palm

We use 750  
tasks and  
activities

## Promoting authentic language acquisition in multilingual contexts

ENGLISH FRENCH GERMAN GREEK HUNGARIAN ITALIAN LADIN SPANISH





Enjoy the music...





Hello

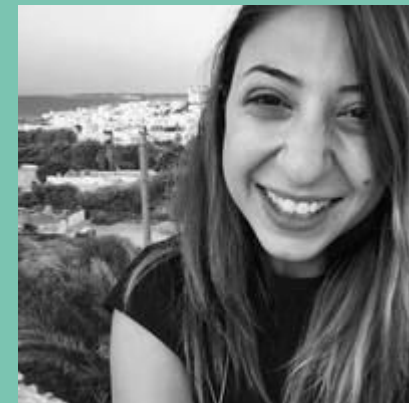
30. Mai, 10-16.30 Uhr, Campus Baden

**PALM: Neue Plattform für Sprachenlernen wird präsentiert**



# Eröffnung & Grußworte des Rektors

## Univ.-Prof. HR MMag. DDr. Erwin Rauscher



Pefkios Georgiades Elementary School &  
University of Cyprus

Welcome to our partners!

from Cyprus



PTE-IGY Gyakorlóiskola

Welcome to our partners!

from Hungary





Free University of Bolzano

Welcome to our partners!

from Italy





Open Academy and NILE

Welcome to our partners!

from the UK



Pädagogische Hochschule Burgenland

Welcome to our partners!

from  
Burgenland





Bilingual Junior High School  
Wiener Neustadt

Praxismittelschule der PH NÖ



Welcome to our partners!

from Lower  
Austria



BG/BRG Stainach

Welcome to our partners!

from Styria



Enjoy the music...



Praxisvolksschule der PH NÖ



# Grußworte des oead! Mag. Margit Dirnberger



SCHULBILDUNG ▾

HOCHSCHULBILDUNG ▾

BERUFSBILDUNG ▾

ERWACHSENENBILDUNG ▾

POLICY SUPPORT ▾

## Nationalagentur Erasmus+ Bildung



### ERASMUS+ SCHULBILDUNG

Das EU-Programm zu Förderung der (vor-)schulischen Bildung in Europa

[WEITERLESEN](#)



Leticia Yulita

# **Intercultural learning and the 21st century language learner**



Claudia Mewald

# **FRINCOM: A framework for intercomprehension methodology and PALM**





Elisabeth Mürwald-Scheifinger

# **Ich verstehe dich nicht?! - sprachensensibel Mathematik unterrichten**



Brian Tomlinson

# Meaningful learning materials in the 21st century

## Room 08 ground floor



# Elisabeth Windl

Educational research, school development and innovation – key tasks

University College of Teacher Education in Lower Austria: initial teacher education & development follow research based curricula

Competence development in practitioner research – high on agenda

Research develops in school-based contexts, results feed back into schools and classrooms

Research oriented teaching and learning – part of daily practice

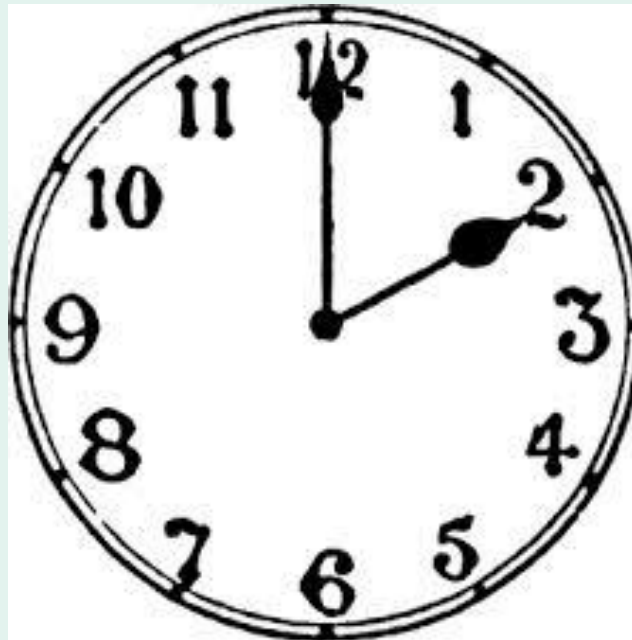
3 core research areas: Professionalization

Teaching and Learning

Digitalisation



Enjoy lunch!  
Please return at 2







Norbert Kraker

Welcome note



PALM Team

# **PALM: Eine interaktive Plattform für das Sprachenlernen**



# Parallel sessions & workshops

See afternoon programme!

Round 1: 15:00 – 15:40

Round 2: 15:50 – 16:30

Enjoy a cup of coffee  
and have a safe  
trip home!

