



NELLA MIA AULA CI

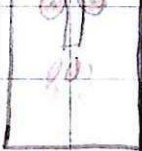
SONO:

1 LAVAGNA 

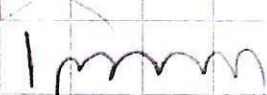
20 SEDIE 

11 BANCHE 


1 CATTEDRA 


1 LAVANDINO 

1 PORTA 


2 TERMOSIFONI 

1 TAVOLONE 

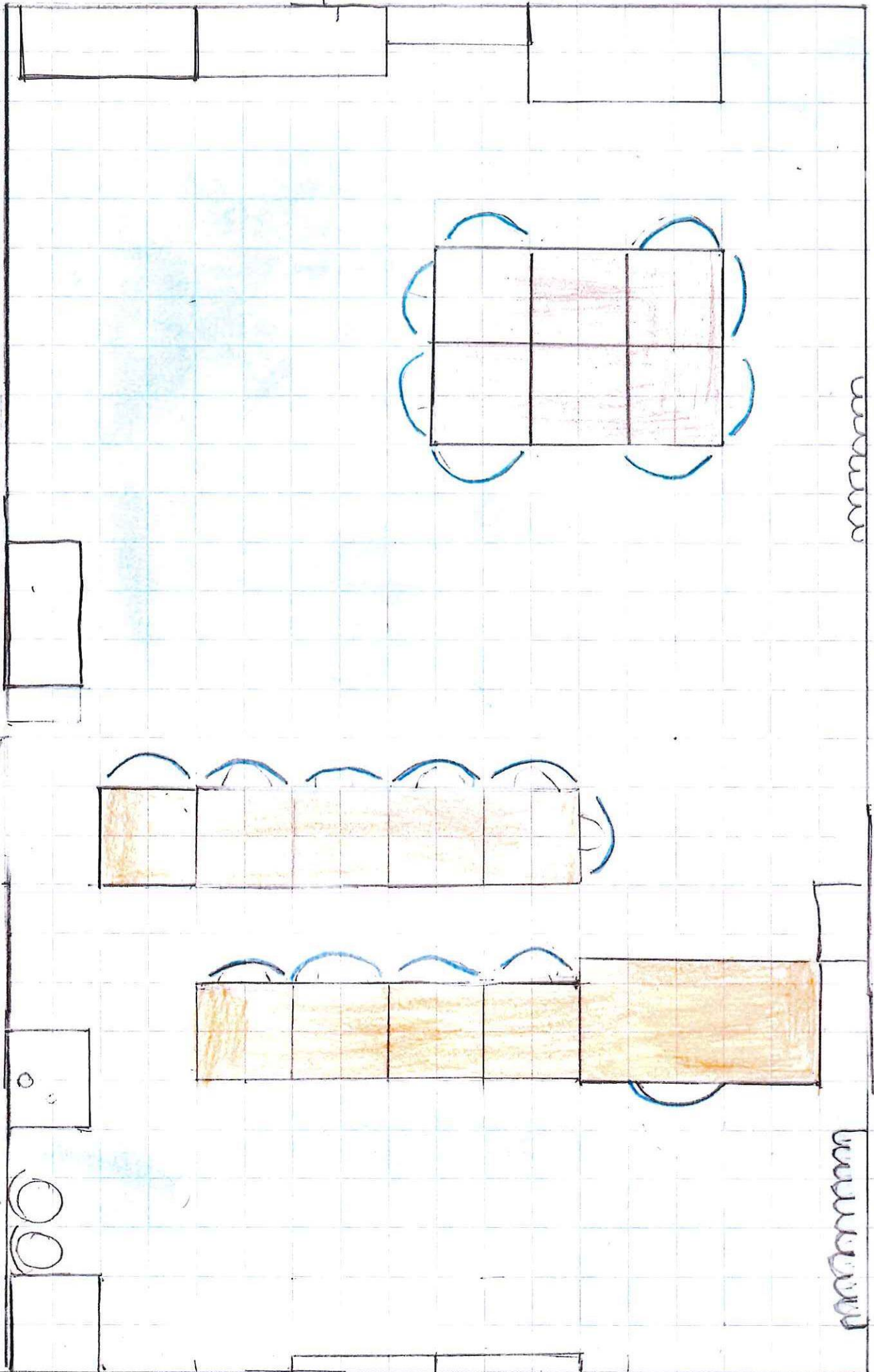
2 ARMADI GRANDI 

2 ARMADI BASSI 

1 LIBRERIA 

9 FINESTRE 

L A M I A M I A A O L A



BRANISSIMA